

AIXR AIR INDUCTION XR FLAT SPRAY TIPS

THE BEST COMPROMISE BETWEEN SPRAYING
QUALITY AND DRIFT LIMITATION



BENEFITS

- The most versatile air induction nozzle
- Low drift potential (up to 90% drift reduction*)
- Excellent spray distribution
- Very compact and easy to clean
- Optimum working pressure : 3 to 4 Bar
- Adapted for all type of applications : Contact, Systemic & Pre-emergence

* Only for AIXR-VP

FEATURES

- Spray angle : 110°
- High wear resistance : UHMWPE* polymer (VP) or ceramic orifice (VK)
- Large pressure range : 1 to 6 Bar
- Offers a large range of droplets : From medium to ultra coarse
- Removable pre-orifice for easy cleaning

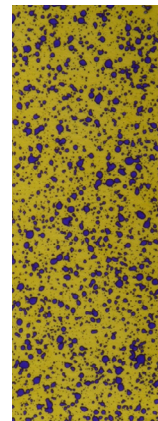
* UHMWPE is an Unique High Molecular Polymer with a higher chemical resistance than a standard polymer.

MORE INFORMATION

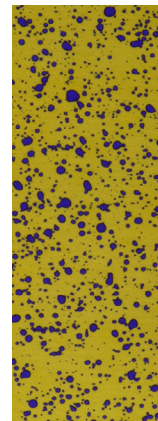
- Included in the official lists of drift limitations : LERAPS (UK)*, JKI (Germany)*, ZNT (France)*, TCT (NL & B)*
- AIXR Ceramic available from 015 to 06 tip capacity
- Adapted for vineyard applications
- Combined assembly of tip, cap and gasket available

*The AIXR-VP nozzle is included in these lists. The AIXR-VK nozzle is yet to be tested.

SPRAY DISTRIBUTION



AIXR11002VP (120 L/ha, 6 Bar, 11 km/h)



AIXR110025VP (120 L/ha, 3 Bar, 10 km/h)



AIXR APPLICATION CHART

Nozzle Icon	Pressure bar	DROP SIZE 110°	CAPACITY ONE NOZZLE IN L/min	50 cm												100 Mesh Strainer	Nozzle Icon
				L/ha													
				5 km/h	6 km/h	7 km/h	8 km/h	10 km/h	12 km/h	14 km/h	16 km/h	18 km/h	20 km/h	25 km/h			
AIXR110015VP AIXR110015VK	1.0	C	0.34	81.6	68.0	58.3	51.0	40.8	34.0	29.2	25.5	22.7	20.4	16.3	114441A-5-CELR		
	2.0	C	0.48	144	115	96.0	82.3	57.6	48.0	41.2	36.0	32.0	28.8	23.0			
	3.0	C	0.59	177	142	118	101	70.8	59.0	50.6	44.3	39.3	35.4	28.3			
	4.0	M	0.68	204	163	136	117	81.6	68.0	58.3	51.0	45.3	40.8	32.6			
	5.0	M	0.76	228	182	152	130	91.2	76.0	65.2	57.0	50.7	45.6	36.5			
	6.0	M	0.83	249	199	166	142	99.6	83.0	71.2	62.3	55.3	49.8	39.8			
AIXR11002VP AIXR11002VK	1.0	VC	0.46	110	92.0	78.9	69.0	55.2	46.0	39.5	34.5	30.7	27.6	22.1	114441A-6-CELR		
	2.0	VC	0.65	156	130	111	97.5	78.0	65.0	55.8	48.8	43.3	39.0	31.2			
	3.0	C	0.79	190	158	135	119	94.8	79.0	67.8	59.3	52.7	47.4	37.9			
	4.0	M	0.91	218	182	156	137	109	91.0	78	68.3	60.7	54.6	43.7			
	5.0	M	1.02	245	204	175	153	122	102	87.5	76.5	68.0	61.2	49.0			
	6.0	M	1.12	269	224	192	168	134	112	96	84.0	74.7	67.2	53.8			
AIXR110025VP AIXR110025VK	1.0	VC	0.57	137	114	97.7	85.5	68.4	57.0	48.9	42.8	38.0	34.2	27.4	114441A-10-CELR		
	2.0	VC	0.81	194	162	139	122	97.2	81.0	69.5	60.8	54.0	48.6	38.9			
	3.0	C	0.99	238	198	170	149	119	99.0	84.9	74.3	66.0	59.4	47.5			
	4.0	M	1.14	274	228	195	171	137	114	97.8	85.5	76.0	68.4	54.7			
	5.0	M	1.28	307	256	219	192	154	128	110	96.0	85.3	76.8	61.4			
	6.0	M	1.40	336	280	240	210	168	140	120	105	93.3	84.0	67.2			
AIXR11003VP AIXR11003VK	1.0	VC	0.68	163	136	117	102	81.6	68.0	58.3	51.0	45.3	40.8	32.6	114441A-4-CELR		
	2.0	VC	0.96	230	192	165	144	115	96.0	82.3	72.0	64.0	57.6	46.1			
	3.0	C	1.18	283	236	202	177	142	118	101	88.5	78.7	70.8	56.6			
	4.0	M	1.36	326	272	233	204	163	136	117	102	90.7	81.6	65.3			
	5.0	M	1.52	365	304	261	228	182	152	130	114	101	91.2	73.0			
	6.0	M	1.67	401	334	286	251	200	167	143	125	111	100	80.2			
AIXR11004VP AIXR11004VK	1.0	VC	0.91	218	182	156	137	109	91.0	78	68.3	60.7	54.6	43.7	114441A-3-CELR		
	2.0	VC	1.29	310	258	221	194	155	129	111	96.8	86.0	77.4	61.9			
	3.0	C	1.58	379	316	271	237	190	158	135	119	105	94.8	75.8			
	4.0	C	1.82	437	364	312	273	218	182	156	137	121	109	87.4			
	5.0	M	2.04	490	408	350	306	245	204	175	153	136	122	97.9			
	6.0	M	2.23	535	446	382	335	268	223	191	167	149	134	107			
AIXR11005VP AIXR11005VK	1.0	VC	1.14	274	228	195	171	137	114	97.7	85.5	76.0	68.4	54.7	114441A-7-CELR		
	2.0	VC	1.61	386	322	276	242	193	161	138	121	107	96.6	77.3			
	3.0	VC	1.97	473	394	338	296	236	197	169	148	131	118	94.6			
	4.0	C	2.27	545	454	389	341	272	227	194	170	151	136	109			
	5.0	C	2.54	610	508	435	381	305	254	218	191	169	152	122			
	6.0	M	2.79	670	558	478	419	335	279	239	209	186	167	134			
AIXR11006VP AIXR11006VK	1.0	XC	1.37	329	274	235	206	164	137	117	103	91.3	82.2	65.8	114441A-9-CELR		
	2.0	VC	1.94	466	388	333	291	233	194	166	146	129	116	93.1			
	3.0	VC	2.37	569	474	406	356	284	237	203	178	158	142	114			
	4.0	C	2.74	658	548	470	411	329	274	235	206	183	164	132			
	5.0	C	3.06	734	612	525	459	367	306	262	230	204	184	147			
	6.0	C	3.35	804	670	574	503	402	335	287	251	223	201	161			
AIXR11008VP	1.0	XC	1.82	437	364	312	273	218	182	156	137	121	109	87.4	114443A-2-CELR		
	2.0	XC	2.58	619	516	442	387	310	258	221	194	172	155	124			
	3.0	VC	3.16	758	632	542	474	379	316	271	237	211	190	152			
	4.0	VC	3.65	876	730	626	548	438	365	313	274	243	219	175			
	5.0	C	4.08	979	816	699	612	490	408	350	306	272	245	196			
	6.0	C	4.47	1073	894	766	671	536	447	383	335	298	268	215			
AIXR11010VP	1.0	UC	2.28	547	456	391	342	274	228	195	171	152	137	109	No Strainer		
	2.0	UC	3.23	775	646	554	485	388	323	277	242	215	194	155			
	3.0	UC	3.95	948	790	677	593	474	395	339	296	263	237	190			
	4.0	XC	4.56	1094	912	782	684	547	456	391	342	304	274	219			
	5.0	XC	5.10	1224	1020	874	765	612	510	437	383	340	306	245			
	6.0	VC	5.59	1342	1118	958	839	671	559	479	419	373	335	268			

Note: Always double check your application rates. Tabulations are based on spraying water at 70° F (21°C). Droplet size data based on ISO 25358.

HOW TO ORDER

Specify tip number

Example:

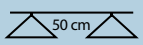
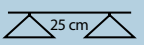
AIXR11004VP - Polymer with VisiFlo® Color-coding

AIXR11003VK - Ceramic with Polypropylene VisiFlo Color-coding

AIXR11005VP-CE - Polymer with VisiFlo Color-coding, includes QuickTeeJet® cap and gasket

AIXR11005VK-CE - Ceramic with VisiFlo Color-coding, includes QuickTeeJet® cap and gasket

OPTIMUM SPRAY HEIGHT

Spray angle	Nozzle Spacing	
		
110°	50 cm	25 cm

